

Challenging attitudes and assumptions surrounding the complexity of residential aged care practice

Susan Gilbert Hunt
Esther May
Charlotte Rees

Division of Health Sciences
University of South Australia



University of
South Australia

WFOT, Cape Town 2018

Resident Experience, Student Experience, Employability – ReSeE Project

- Collaborative project focused on developing and extending student learning opportunities in aged care.
- Exploring transferability of a centralised and interprofessional placement model
- Evaluation data – students, staff and residents.

Key finding
Student's lack of preparation negatively impacted on staff willingness to supervise students





Welcome to the Aged Care Awareness website

Aged Care is a rapidly growing, rich and diverse practice environment. This website aims to showcase the increasing complexity of aged care, challenge the attitudes and assumptions we may hold and assist us in moving to a deeper understanding of how we can deliver quality care to older people.

Feedback


HOME


WELCOME


MODULES


ASSESSMENTS


MEDIA GALLERY


WHO WE ARE


FAQ

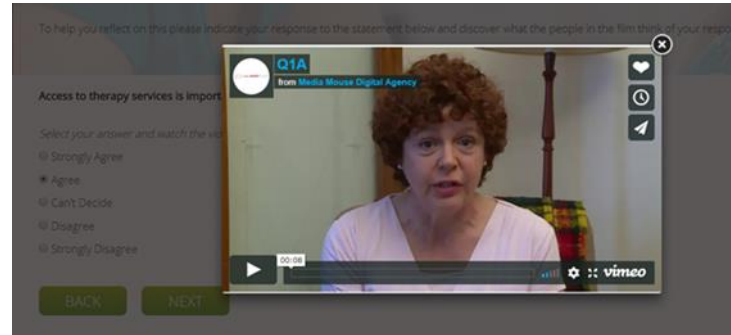

CONTACT



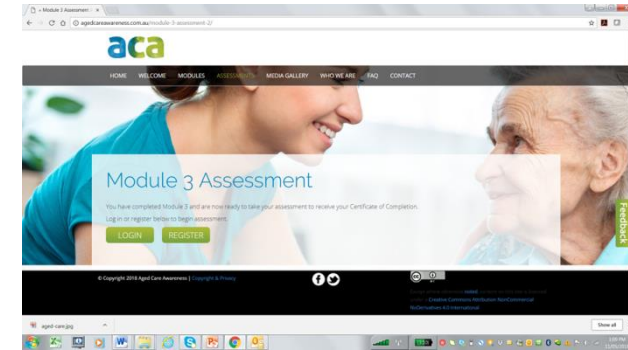
Transforming understanding



Authentic
storyline/ range of
perspectives
via film & text



Level of agreement with
reflective statements -
feedback on response from
character in film



Online assessment task
to receive certificate of
completion



Introduction to Module 3

Welcome to Module Three. This module focuses on collaborative practice and aims to increase your awareness and understanding of the range of disciplines and services involved in supporting older people in the community.

You will view 5 short films that explore one gentleman's experience of using a range of service options available to enable him to remain in his own home and by reflecting on the films you will be able to:

- Demonstrate an understanding of the range of services available to support older people
- Reflect on the skills and knowledge needed for effective collaborative practice
- Analyse your attitudes and assumptions associated with career pathways that involve working with older people
- Identify additional resources to enhance your own learning.

Please note that the films provide a stimulus for reflection and discussion and are not intended to necessarily represent 'best practice'.

START

Feedback

Family and Community Care



Film length 6 mins

BACK

NEXT

Feedback



University of
South Australia



Chronic Disease Management

Contextual background

Globally the older population is the fastest growing population and it is estimated that by 2050, there will be 2 billion people aged over 60 years¹. The level of health and functional status a person experiences as they age is related to behaviour or lifestyle and exposure to health risks rather than communicable diseases¹. There was an argument in the 1980's; termed Compression of Morbidity, hypothesising that living longer would result in additional years of chronic debilitating illness², that is older people are more likely to be living with multiple chronic diseases requiring health and social services and supports. In Australia, the 2011 Productivity Commission report indicated over one million older Australians were receiving aged care services, predominantly in their home³. Moreover, older Australians generally wish to remain at home or at least choose where they live, maintain connections with their community and/ or family and have choice over the care they receive³.

Chronic disease management

The incidence of various diseases can increase with age and as a result older people may have multiple chronic diseases/conditions. According to the National Council on Aging 73% of older adults have at least two chronic conditions⁴; such as diabetes, arthritis, asthma, cardiovascular disease. Some neurological disorders are also more prevalent in older people for example dementia and Parkinson's disease. Supporting people living with chronic disease to engage in shared decision making in relation to disease self-management is associated with improved health outcomes⁵. Models of chronic disease management focus on empowering and activating the individual⁶. An important aspect of empowerment involves the health professional developing an equal partnership with the person so that they are actively in decisions about services they receive⁵.

Parkinson's disease is a progressive degenerative neurological disorder, a chronic disease, affecting a person's capacity to control their body movements. It is more prevalent in people over the age of 50 years and whilst treatment can minimise symptoms it does not halt the disease. Please click either of the following links to learn more about Parkinson's disease and its impact on the individual.

- Parkinson's Australia: [Living with Parkinson's](#).
- European Parkinson's Disease Association: [Guide to living with Parkinson's disease](#).

Services to support older people

Services aimed at supporting older people need to ensure the older person is central in decision making to enable them to maintain their autonomy and quality of



What is your response to the story?

Think about how you responded to the 'Therapy Services' film. What services would you recommend for Mr.Rosa? Can you envision how therapists can best collaborate to ensure Mr Rosa is receiving optimum support? Are there other ways you think Therapy Services can work to support older people in our community?

To help you reflect on this please indicate your response to the statement below and discover what the people in the film think of your response.

Access to therapy services is important for older people.

Select your answer and watch the video response.

- Strongly Agree
- Agree
- Can't Decide
- Disagree
- Strongly Disagree

BACK

NEXT

Feedback



University of
South Australia

USAGE

Higher Education

- Embedding into curriculum
 - Film material used to support clinical reasoning
- Preparation for placement
- Clinical facilitator training

Aged Care Services

- Orientation for new staff
- Professional development activities
- Student workshop material

Questions?



<http://agedcareawareness.com.au/>

Please use 😊