



Positioned For Function: The Impact of the Appropriate Wheelchair on Occupational Performance

A Single Case Study

Megan Giljam

WFOT Congress 2018

UHAMBO



SHONAQUIP®

A Hybrid Social Enterprise Working Together Towards an Inclusive Society

Our project in the Kingdom of eSwatini



L.M.

Person



Occupation



Environment



L.M. Existing Device

Head poorly positioned

Trunk not well supported

Limited use of upper limbs

Cushion too thin and
bottomed out

Fixating for stability



What is an Appropriate Wheelchair? (WHO, 2008)

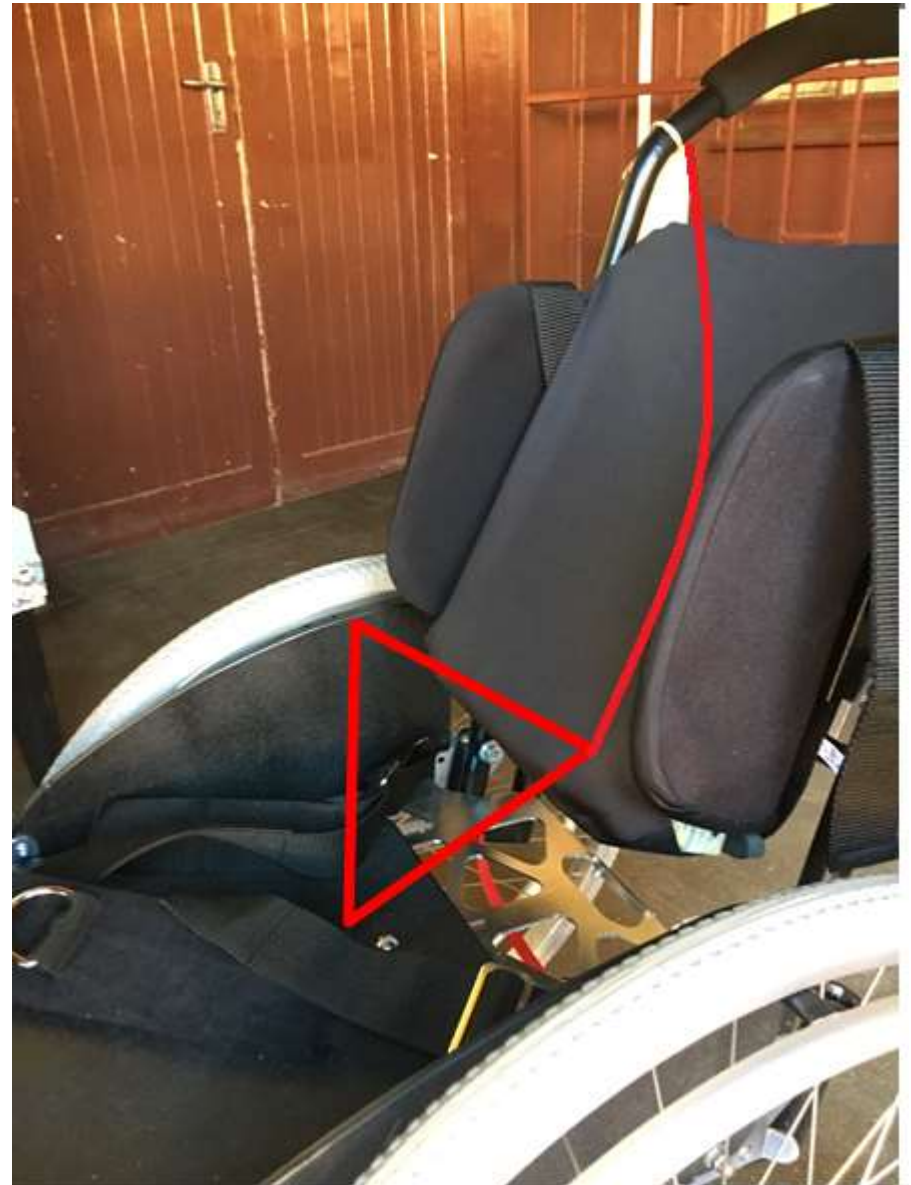


- Meets the user's needs and environment
- Provides proper fit and support
- Is safe and durable
- Can be obtained and maintained at an affordable cost

Intervention – cushion customisations



Intervention – open seat to back angle



Final Posture



Outcome – better positioned for classroom activities



Outcome – improved independence in the school yard



Thank You!

Please contact us for any queries:

Head Office, South Africa:

Tel: +27 21 7978239

Email: info@shonaquip.co.za

Eastern Cape, South Africa:

Tel: +27 79 524 4350

Email: dietlind@shonaquip.co.za

Gauteng, South Africa:

Tel: +27 12 665 1211

Email: ruth@shonaquip.co.za

Botswana:

Tel: +26 310 7063

Email: megan@shonaquip.co.za

