

THE RELEVANCE OF THE UFS MODEL – PERCEPTIONS OF STUDENTS AND PRACTITIONERS

WFOT Congress 2018
23 May 2018

Ms. Zelda O'Reilly
Ms. Mia van Schalkwyk (Vermaak)
Dr. Sanet du Toit
Ms. Marieta Visser

T: +27(0)51 401 9111 | info@ufs.ac.za | www.ufs.ac.za

© Copyright reserved
Kopiereg voorbehou

UNIVERSITY OF THE
FREE STATE
UNIVERSITEIT VAN DIE
VRYSTAAT
YUNIVESITHI YA
FREISTATA



UFS·UV
HEALTH SCIENCES
GESONDHEIDSWETENSAPPE

ORIENTATION TO SESSION

- The UFS model
- Overview of study
- Findings of study

T: +27(0)51 401 9111 | info@ufs.ac.za | www.ufs.ac.za

© Copyright reserved
Kopiereg voorbehou

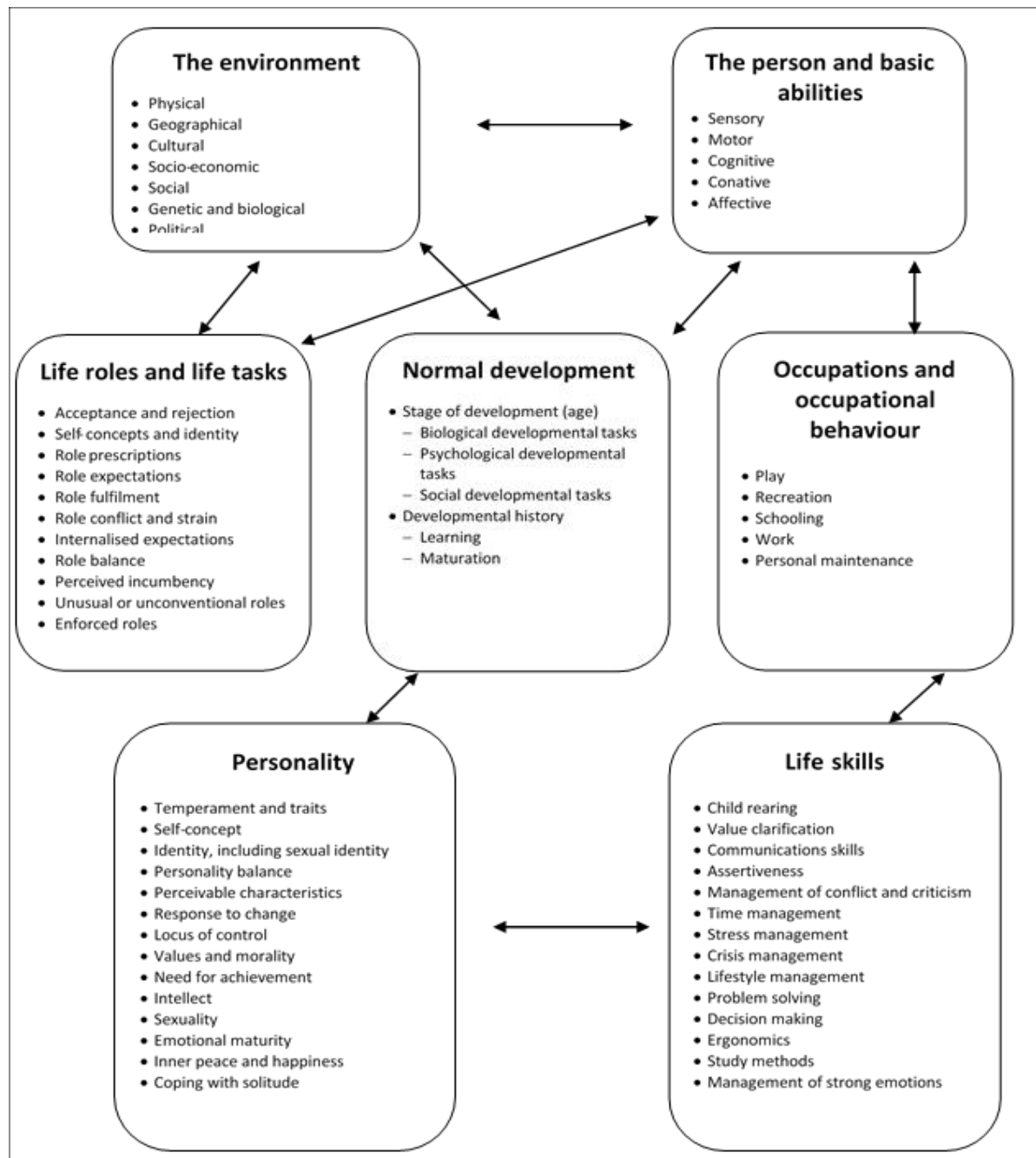
UNIVERSITY OF THE
FREE STATE
UNIVERSITEIT VAN DIE
VRYSTAAT
YUNIVESITHI YA
FREISTATA



UFS·UV
HEALTH SCIENCES
GESONDHEIDSWETENSKAPPE

Has anyone heard of the UFS model?

The model of the ontogenesis and dynamics
of occupational function and dysfunction
(Pretorius, 1997;61)



The UFS Model of the Ontogenesis and Dynamics of Occupational Function and Dysfunction
 (Developed By Jeanne Pretorius)
 (Pretorius, 1997: 47)

Environment

Person and
basic abilities

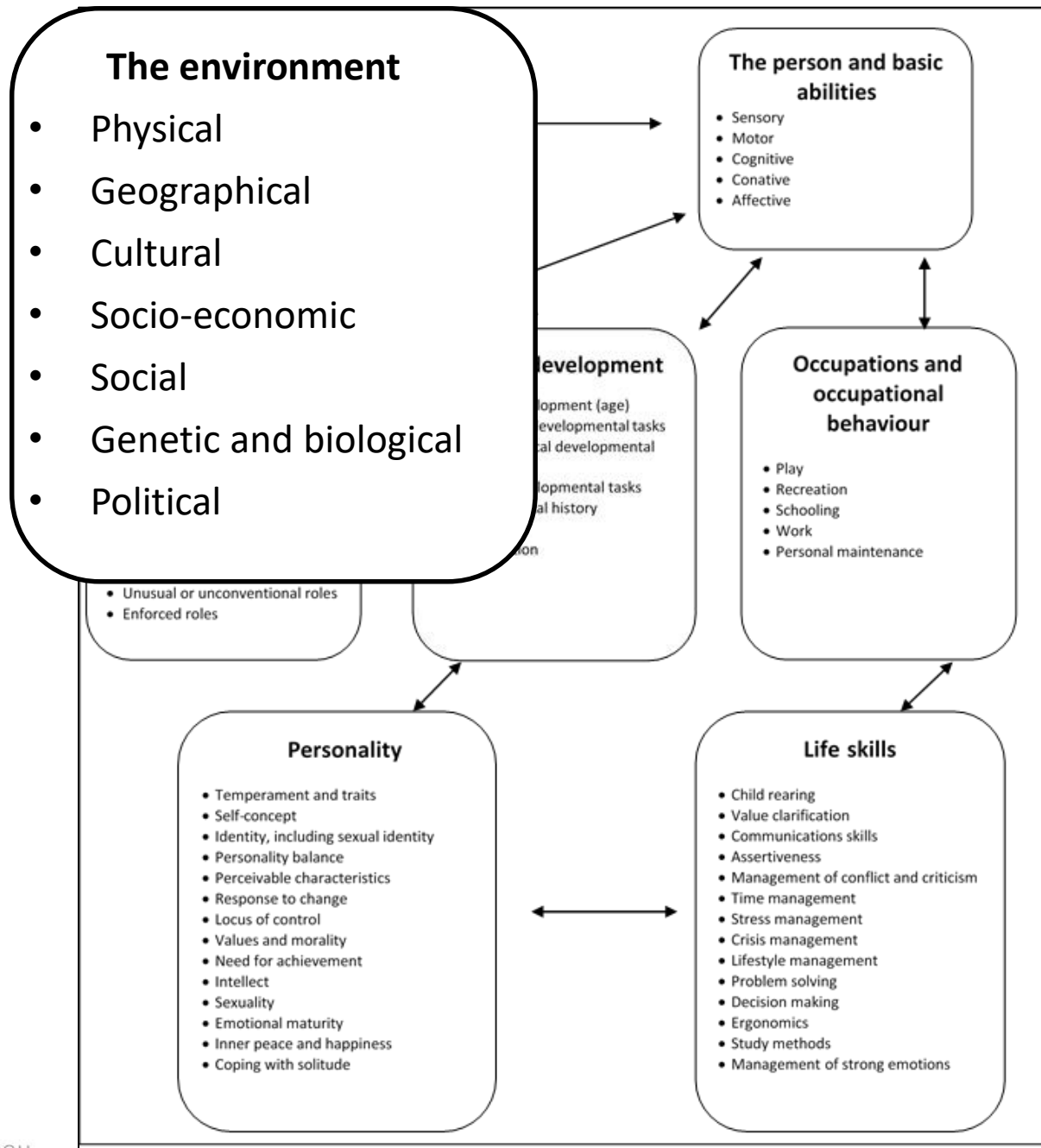
Life roles and
life tasks

Normal
development

Occupation and
occupational
behaviour

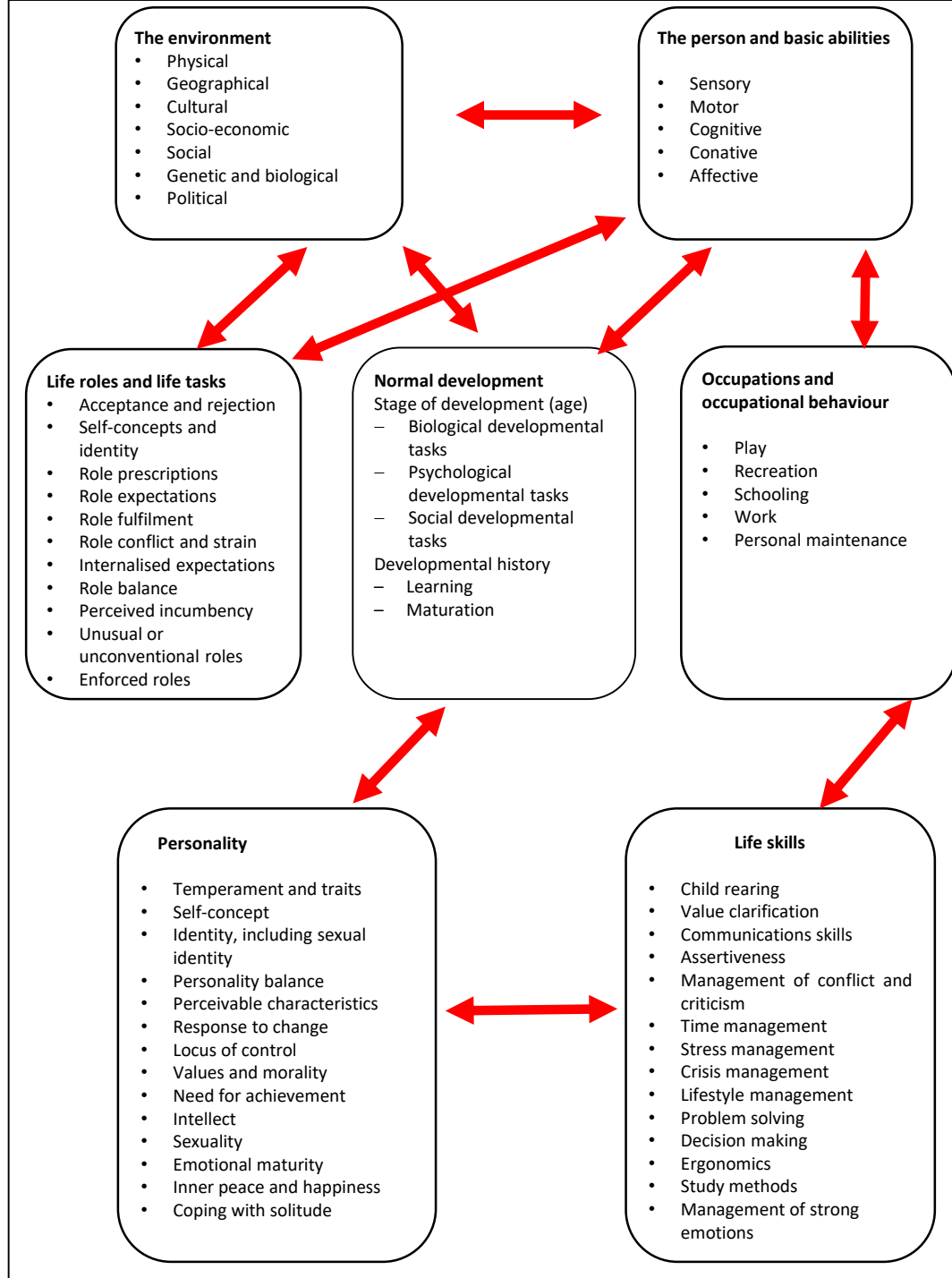
Personality

Life skills



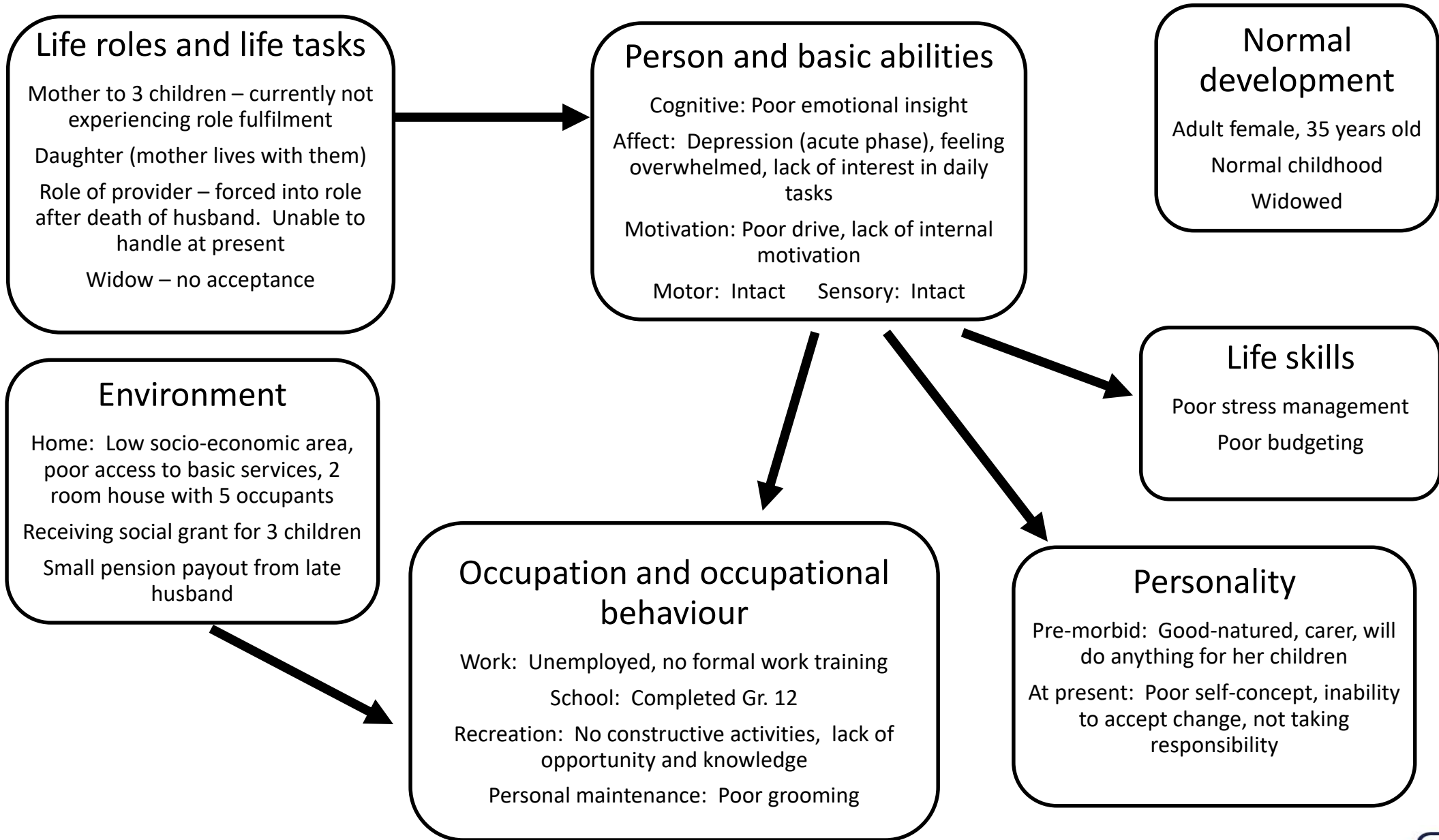
The UFS Model of the Ontogenesis and Dynamics of Occupational Function and Dysfunction (Developed By Jeanne Pretorius) (Pretorius, 1997: 47)





The UFS Model of the Ontogenesis and Dynamics of Occupational Function and Dysfunction (Developed By Jeanne Pretorius) (Pretorius, 1997: 47)





REASONS FOR STUDY

- UFS – curriculum
- Model has not been formally revised
- Applied in practice (Vermaak & Nel, 2016)

THE STUDY

- Qualitative
- Nominal group technique
 - 1 group of students
 - 2 groups of clinicians
 - 1 group of academic staff
- Inclusion criteria
 - Knowledge and/or experience

FINDINGS

Participants reported that the UFS model is:

- Comprehensive
- Holistic
- Dynamic

- OT process
 - Assessment
 - Treatment
 - Discharge planning
 - Clinical reasoning

FINDINGS (cont.)

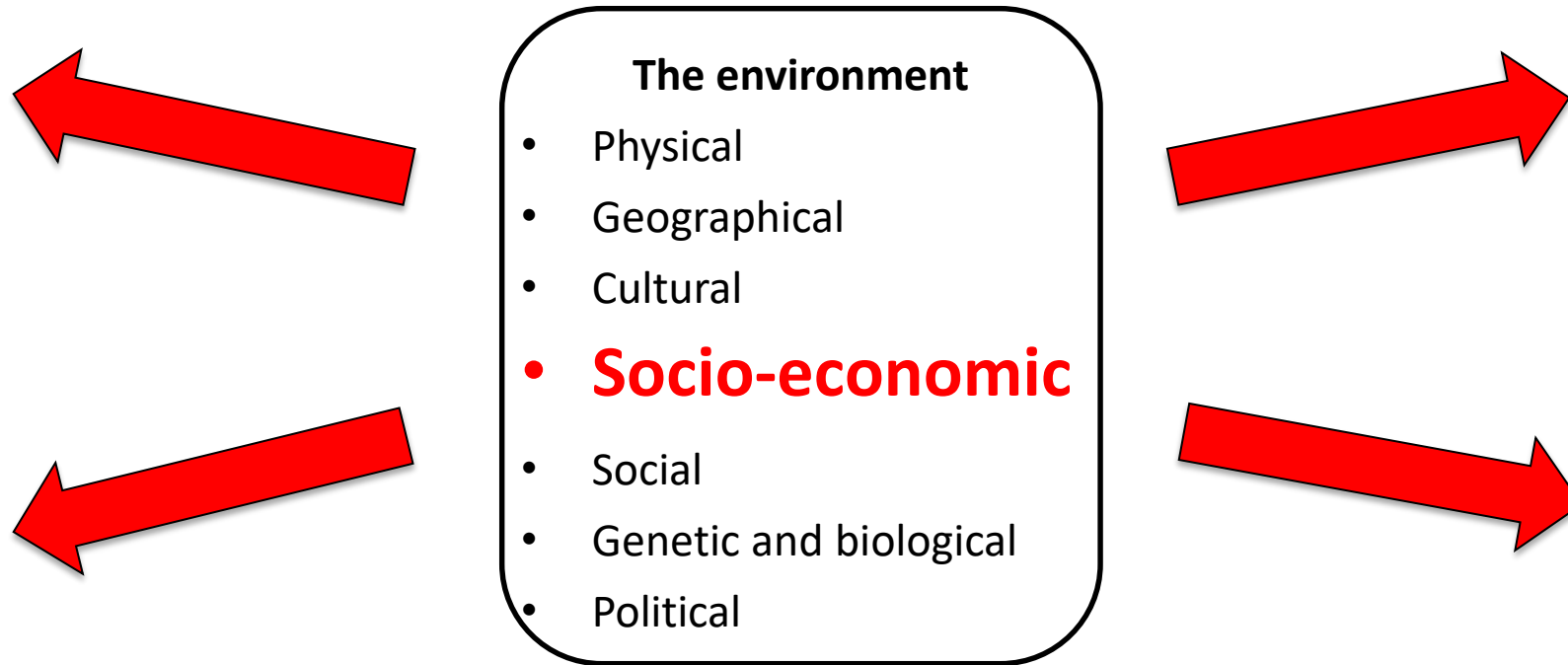
The UFS model is:

- Diverse w.r.t.
 - Specialist areas
 - Age groups
 - Cultures
- Easy to explain to and discuss with:
 - Client
 - Family, caregivers
 - Multi-professional team

FINDINGS (cont.)

The UFS model is:

- Proudly South African (developed in the global South)



FINDINGS (cont.)

- Contradictory perceptions

Terminology	– Easy to understand	– Outdated – Confusing
Format	– Comprehensive	– Too much detail – Time consuming
Interpretation	– Easy to interpret	– Difficult to choose which factors are important

- Other concerns
 - Lack of research
 - Missing components – spirituality, community based practice

CONCLUSION

REFERENCES

Pretorius, J. 1997. A model of ontogenesis and the dynamics of occupational function and dysfunction. In R. B. Crouch & V. M. Alers, eds. *Occupational therapy in psychiatry and mental health*. Maskew Miller Longman: 46–75.

Vermaak, M.E. & Nel, M. 2016. From paper to practice – Academics and practitioners working together in enhancing the use of occupational therapy conceptual models. *South African Journal of Occupational Therapy*, 46(3): 35–40.



With special thanks and appreciation to Vivyan Alers

Thank You

T: +27(0)51 401 9111 | info@ufs.ac.za | www.ufs.ac.za

© Copyright reserved
Kopiereg voorbehou

UNIVERSITY OF THE
FREE STATE
UNIVERSITEIT VAN DIE
VRYSTAAT
YUNIVESITHI YA
FREISTATA



UFS·UV
HEALTH SCIENCES
GESONDHEIDSWETENSAPPE