

1. INTRODUCTION

URBAN PARKS AND ELDERLY PEOPLES

Possible spaces for leisure practice;
Facilitatin socialization;
Areas of Quality of life



Complexity in mappin accessibility
conditions in public urban leisure spaces



Interdisciplinary look:
Architecture and Urbanism
+
Occupational Therapy

- Person-Envoronment relation;
- The Elderly;
- Physical space needs;
- Accessibility;
- Wayfinding



ACCESIBILITY AND WAYFINDING IN ELDERLY PEOPLE IN URBAN PARKS: A CASE STUDY IN A ZOOBOTANIC PARK IN THE NORTHEAST OF BRAZIL.

Berla Moreira de Moraes, PhD; Dhyego de Lima Nogueira, MSc

1. OBJECTIVE

- ❖ The study aimed to identify aspects that can influence spatial orientation (wayfinding) and the accessibility for elderly people in urban parks.

Based in Study of Master degree In Architecture and Urbanism

NOGUEIRA, D.L. **Wayfinding e legibilidade ambiental em parque urbano: Um estudo da percepção de usuários idosos.** Dissertação de mestrado, Programa de Pós-graduação em Arquitetura e Urbanismo, Universidade Federal da Paraíba, João Pessoa, 2017.

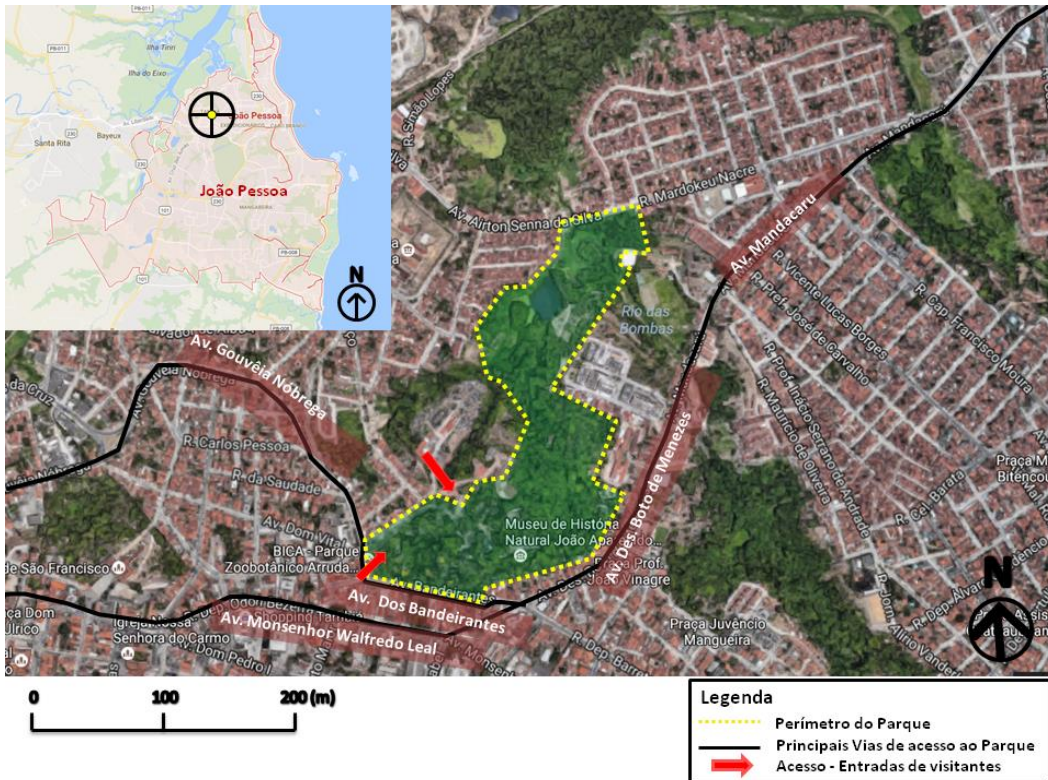


ACCESIBILITY AND WAYFINDING IN ELDERLY PEOPLE IN URBAN PARKS: A CASE STUDY IN A ZOOBOTANIC PARK IN THE NORTHEAST OF BRAZIL.

Berla Moreira de Moraes, PhD; Dhyego de Lima Nogueira, MSc

2. METHODOLOGY

This is a descriptive and exploratory study with the use of multimethod required in the built environment's postsettlement evaluation.

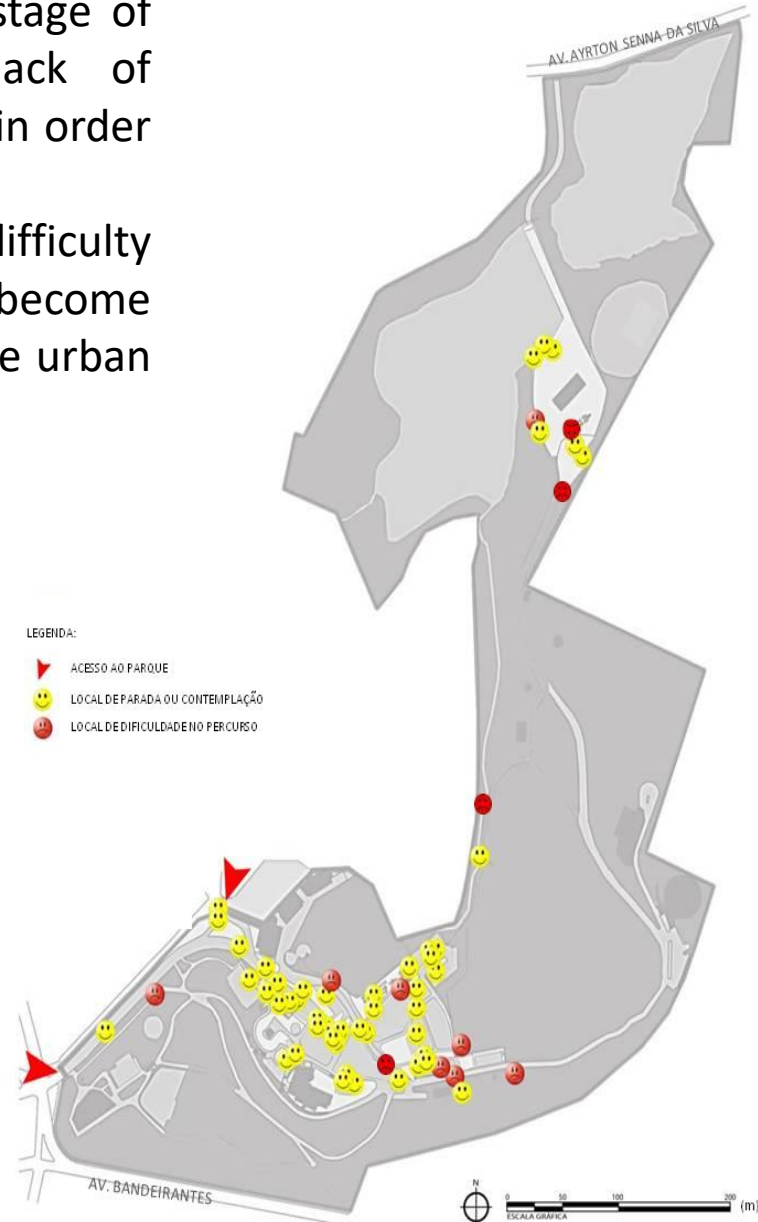
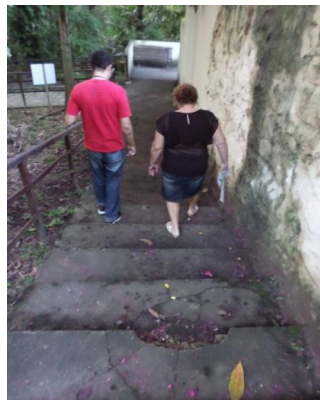


- **Local:** Zoobotanic park Arruda Câmara in the city of João Pessoa Brazil.
- **Period:** Jan.2016 >> Jul. 2017
- **Research Strategies:**
 - Exploratory field observations;
 - Walkthrough;
 - Behavior maps designing;
 - Interviews with the target public;

3. RESULTS

The results show built environment maintenance flaws, accessibility barriers (ramps/stairways in advanced stage of deterioration, absence of signing standards), lack of continuity in walkways, and the lack of staff training in order to provide adequate information.

These factors were perceived as environmental difficulty generators that can affect the way the elderly people become spatially oriented, utilize, perceive and experience the urban parks.



4. CONSIDERATIONS

The use of the multimethod approach is effective to Occupational Therapy, since it expresses in the relationship person environment the dynamic potential of occupation in urban living environments.



ACCESIBILITY AND WAYFINDING IN ELDERLY PEOPLE IN URBAN PARKS: A CASE STUDY IN A ZOOBOTANIC PARK IN THE NORTHEAST OF BRAZIL.

Berla Moreira de Moraes, PhD; Dhyego de Lima Nogueira, MSc

REFERENCES

- (IBGE, 2014); (LOPES, 2002); (DUARTE; COHEN, 2004)
- (PERRACINI, 2013); (OMS-CIF, 2002); (MORAES; SILVA, 2008); (BINS ELY; DISCHINGER; PIARDI, 2012); (CARLIN; BINS ELY, 2005); (SILVEIRA; LAPA; RIBEIRO, 2007) ; (SILVEIRA; CASTRO, 2014); (ABNT, 2015) (DISCHINGER et al, 2004); (DISCHINGER, 2000); (CAMBIAGHI, 2007); (CUD, 1997) (BINS ELY, 2004); (BRASIL, 2015);
- (ITTELSON et al, 1974); (CAVALCANTI; ELALI, 2011); (CAVALCANTE; NÓBREGA, 2011); (PINHEIRO; ELALI, 2011); (HIGUCHI; KUHNEN; BOMFIN, 2011); (RHEINGANTZ; ALCANTARA; DEL RIO, 2005); (PINHEIRO; ELALI, 2011); (DISCHINGER, 2000)
- (LYNCH, 1997); (LIMA et al, 1994); (LOBODA; DE ANGELIS, 2005); (MAYONE, 2009); (BENINI, MARTIN, 2010); (BARGOS; MATIAS, 2011); (BOVO; CONRADO, 2012); (RUBIRA, 2016)
- (GÜNTHER; ELALI; PINHEIRO, 2004); (PMJP, 2017); (RHEINGANTZ, 2009)

More informations and contact:
Email: CODEDLN@HOTMAIL.COM



ACCESIBILITY AND WAYFINDING IN ELDERLY PEOPLE IN URBAN PARKS: A CASE STUDY IN A ZOOBOTANIC PARK IN THE NORTHEAST OF BRAZIL.

Berla Moreira de Moraes, PhD; Dhyego de Lima Nogueira, MSc